



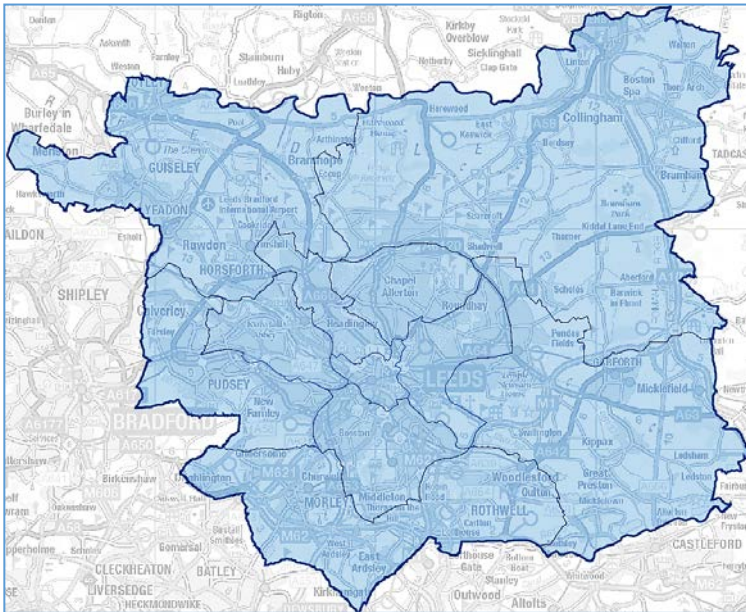
**WEST YORKSHIRE
POLICE**

Leeds City Centre: Night time Economy Related Crime

November 2015

Produced by the Leeds District Analytical Unit

Authorised by:	Liam Topp, Senior Intelligence Analyst, LDAU
Author(s):	Ian Crossley, Intelligence Analyst, LDAU
Date	Version 2.2 – 27 th November 2015
File Location:	WYP Infoshare > Leeds District > Crime Nominal Related > Intelligence > Leeds District Analytical Unit > a. Completed Work



Contents

Introduction and Aims	2
Methodology	2
1. Defined Leeds City Centre area	3
2. Key Findings	3
3. Performance: Leeds City Centre	4
4. Night Time Economy (18:00-05:59)	6
5. CIP Red Area – comparisons:	10

Introduction and Aims

The aim of this document is to highlight crime risk areas and crime levels during the night time economy in Leeds city centre. This document should inform police and partners to aid in the reduction of crime.

This document is protectively marked **NOT PROTECTIVELY MARKED** under the government protective marking scheme.

The product includes mapping data licensed from Ordnance Survey with the permission of the Controller of Her Majesty's Stationery Office. © Crown copyright all rights reserved Licence number 100022119 2015. The Ordnance Survey mapping included within this publication is provided by West Yorkshire Police under licence from Ordnance Survey in order to fulfil its statutory responsibility to tackle crime and disorder. Persons viewing this mapping should contact Ordnance Survey copyright for advice where they wish to licence Ordnance Survey mapping for their own use. Unauthorised reproduction infringes Crown copyright and may lead to prosecution or civil proceedings.

Methodology

A variety of Corvus searches were used to extract the relevant offence, property and victim details used in the subsequent analysis. The following general criteria were used in relation to extracting the information.

Date Range: Date 1st Crimed: 01 September 2008.31 August 2015

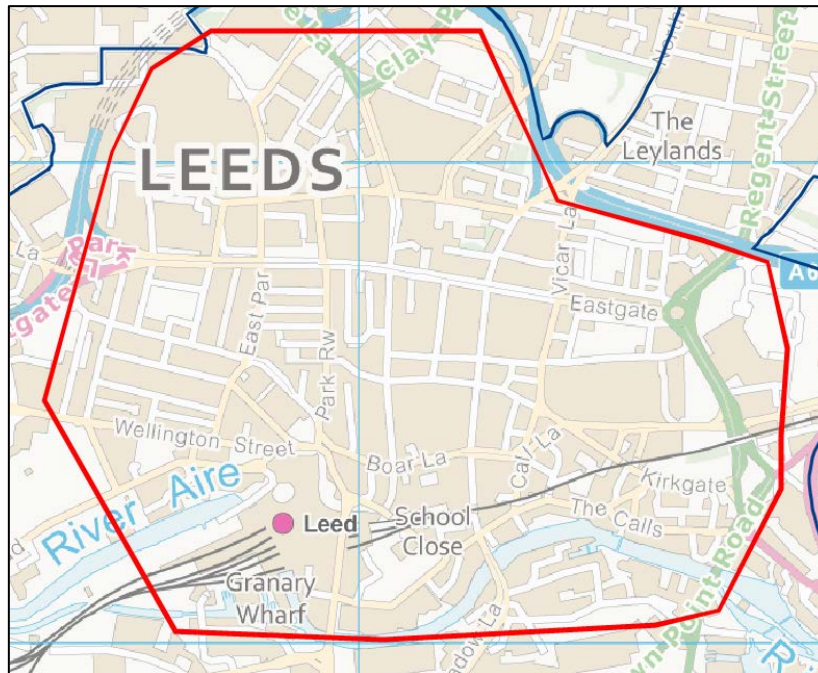
Offences: Theft from Person, Theft non Specific, Robbery, Assault, Affray, Murder/Manslaughter, Drunk & Disorderly, Public Order

Night time economy is taken as 18:00-05:59.

Further examination was performed using MS excel. Map Modeller, the Force GIS was used for mapping purposes and analysis. Additional reference has been made to source systems, including Niche. Some data may have been gathered from outside agencies, such as partners, other ACPO forces or the Home Office. Where this is the case it has been referenced accordingly.

1. Defined Leeds City Centre area

Throughout this document, data that falls into the area shown within the red line below will be classified as “Leeds City Centre” and will be referred to as such throughout the document.



2. Key Findings

- Overall offending in Leeds City centre has dropped in the 14/15 year by 785 when compared to 13/14.
- Although Theft non Specific and Theft from Person have dropped against the preceding year, they have the greatest volume in 14/15 and also since 2008.
- Most incidents in licensed premises are thefts or assault. The number of assaults in licensed premises has increased in 14/15 compared to 13/14, as has the number of associated alcohol involved flags.
- During the DTE, thefts are a problem despite a drop in 14/15 compared to 13/14.
- During the NTE, assaults increase and are greater than the same figure last year.
- Call Lane, Briggate and Albion Street have had the most offences on them in 14/15.
- Assaults are roughly split between off street and on street offending in 14/15 and are consistently so over the examined period. There are more reports of off street theft offences than on street.
- Seasonality shows assault, drunk & disorderly, theft from person and theft non-specific reduce over the summer months of May – August and increase steadily peaking in December.
- Hotspot locations for NTE offending are around Duncan Street and Lower Briggate.
- The top 3 offence categories – assault, theft from person and theft non-specific, tend to occur in two broad locations. Area 1 is around Merrion Street/Woodhouse Lane/New Briggate. Area 2 is around Boar Lane/Duncan Street/Lower Briggate/ Call Lane and has a denser amount of offences.
- Males are generally victims and offenders in assaults. Females are more likely to be victims in theft offences.

3. Performance: Leeds City Centre

The first three tables cover both the day time economy (DTE) and night time economy (NTE). The last differentiates between the two periods.

All data

Occurrence Type	2008/2009	2009/2010	2010/2011	2011/2012	2012/2013	2013/2014	2014/2015	Grand Total	Change 13/14 to 14/15
AFFRAY	59	87	86	50	49	26	28	385	2
ASSAULT	1047	1107	1131	877	831	749	925	6667	176
DRUNK AND DISORDERLY	528	549	628	651	667	374	267	3664	-107
MURDER/MANSLAUGHTER	3	2	1	1	2	0	2	11	2
PUBLIC ORDER	226	249	217	164	162	132	141	1291	9
ROBBERY	112	98	58	65	53	68	56	510	-12
THEFT FROM PERSON	841	1158	1620	1844	1970	1702	1159	10294	-543
THEFT NON SPECIFIC	1398	1493	1723	1833	2043	1771	1459	11720	-312
Grand Total	4214	4743	5464	5485	5777	4822	4037	34542	-785

Licensed Premises Flag

Occurrence Type	2008/2009	2009/2010	2010/2011	2011/2012	2012/2013	2013/2014	2014/2015	Grand Total	Change 13/14 to 14/15
AFFRAY	8	12	11	7	4	4	5	51	1
ASSAULT	251	218	261	157	143	127	179	1336	52
DRUNK AND DISORDERLY	27	23	16	26	20	10	6	128	-4
MURDER/MANSLAUGHTER	1	0	0	0	0	0	0	1	0
PUBLIC ORDER	21	19	13	5	6	5	3	72	-2
ROBBERY	3	9	5	1	0	0	1	19	1
THEFT FROM PERSON	316	571	960	982	1090	702	451	5072	-251
THEFT NON SPECIFIC	508	631	750	718	760	609	504	4480	-105
Grand Total	1135	1483	2016	1896	2023	1457	1149	11159	-308

Alcohol involved flag

Occurrence Type	2008/2009	2009/2010	2010/2011	2011/2012	2012/2013	2013/2014	2014/2015	Grand Total	Change 13/14 to 14/15
AFFRAY	46	62	58	31	25	11	12	245	1
ASSAULT	677	768	717	324	292	221	293	3292	72
DRUNK AND DISORDERLY	521	543	588	471	480	296	227	3126	-69
MURDER/MANSLAUGHTER	3	0	0	1	1	0	0	5	0
PUBLIC ORDER	103	100	85	53	58	31	22	452	-9
ROBBERY	29	29	14	8	7	8	8	103	0
THEFT FROM PERSON	84	141	178	100	82	55	30	670	-25
THEFT NON SPECIFIC	105	109	118	66	54	38	31	521	-7
Grand Total	1568	1752	1758	1054	999	660	623	8414	-37

Offences by day or night time economy

DTE

Occurrence Type	2008/2009	2009/2010	2010/2011	2011/2012	2012/2013	2013/2014	2014/2015	DTE Total	Change 13/14 to 14/15
AFFRAY	5	9	11	3	11	0	3	42	3
ASSAULT	239	226	238	171	184	151	170	1379	19
DRUNK AND DISORDERLY	104	71	61	74	72	33	27	442	-6
MURDER/MANSLAUGHTER	1	1	0	0	0	0	1	3	1
PUBLIC ORDER	111	101	91	63	62	76	82	586	6
ROBBERY	46	27	21	24	17	24	11	170	-12
THEFT FROM PERSON	339	419	389	478	526	678	385	3214	-293
THEFT NON SPECIFIC	652	658	711	758	909	847	668	5203	-179
Grand Total	1497	1512	1522	1571	1781	1809	1347	11039	-462

NTE

Occurrence Type	2008/2009	2009/2010	2010/2011	2011/2012	2012/2013	2013/2014	2014/2015	NTE Total	Change 13/14 to 14/15
AFFRAY	54	78	75	47	38	26	25	343	-1
ASSAULT	808	881	893	706	647	598	755	5288	157
DRUNK AND DISORDERLY	424	478	567	577	595	341	240	3222	-101
MURDER/MANSLAUGHTER	2	1	1	1	2	0	1	8	1
PUBLIC ORDER	115	148	126	101	100	56	59	705	3
ROBBERY	66	71	37	41	36	44	45	340	1
THEFT FROM PERSON	502	739	1231	1366	1444	1024	774	7080	-250
THEFT NON SPECIFIC	746	835	1012	1075	1134	924	791	6517	-133
Grand Total	2717	3231	3942	3914	3996	3013	2690	23503	-323

Offences from premises managed by BTP for 2014-2015.

Occurrence Type	DTE	NTE	Total
AFFRAY	0	3	3
ASSAULT	1	14	15
DRUNK AND DISORDERLY	1	19	20
MURDER/MANSLAUGHTER	0	0	0
PUBLIC ORDER	0	0	0
ROBBERY	0	0	0
THEFT FROM PERSON	5	101	106
THEFT	0	2	2
Grand Total	7	139	146

4. Night Time Economy (18:00-05:59)

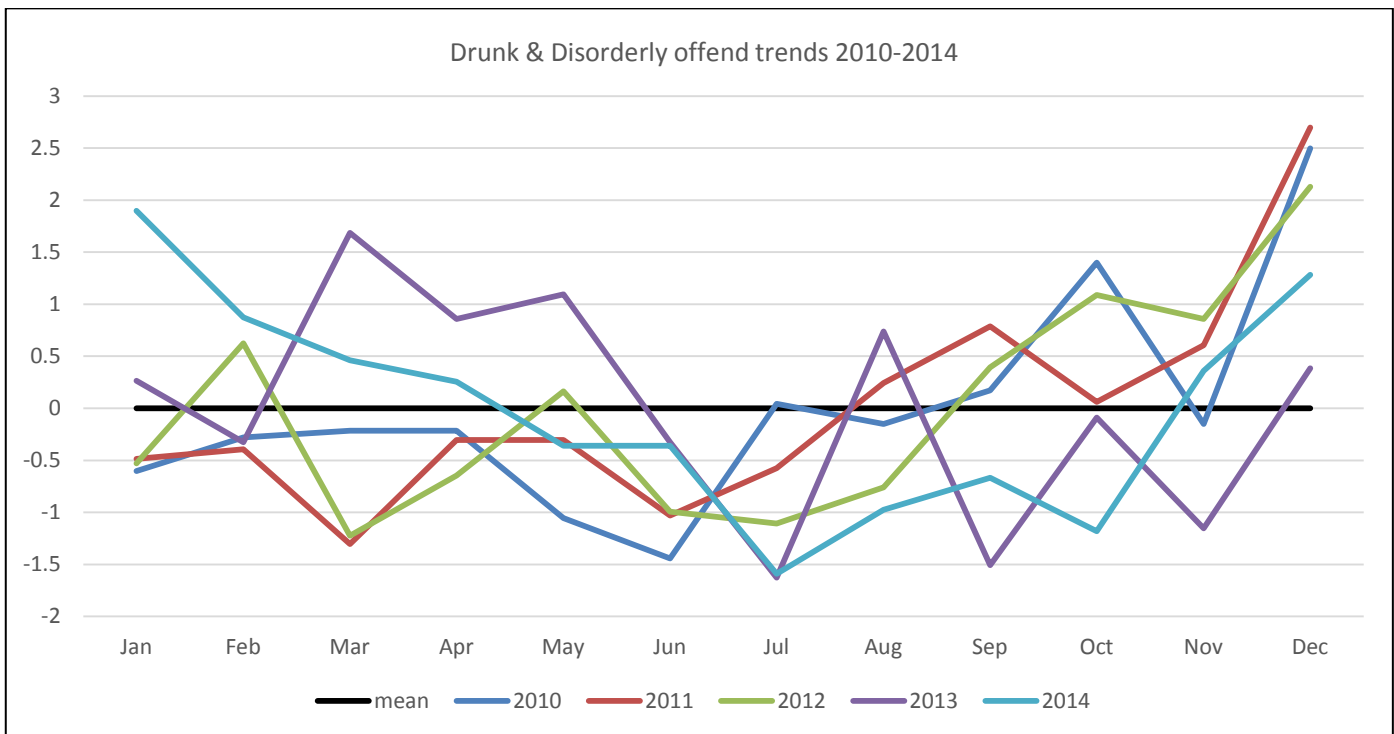
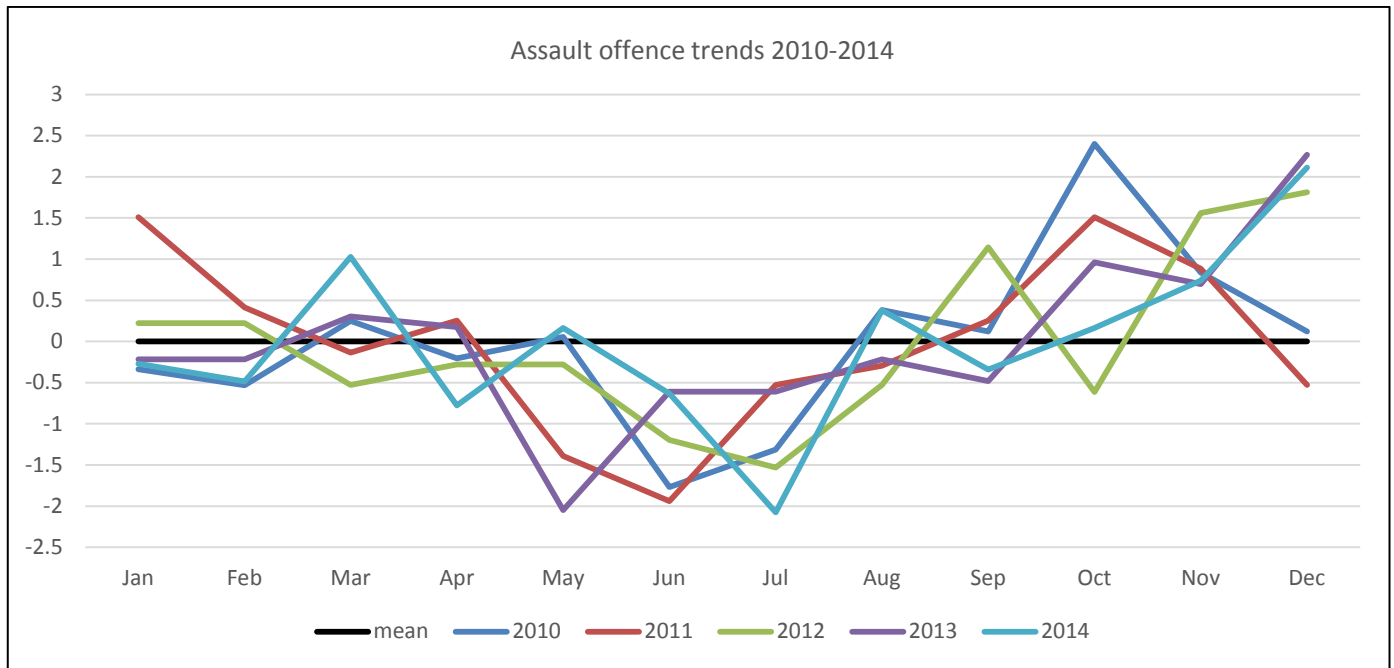
4.1 The tables below relate to Leeds City Centre night time economy offending only

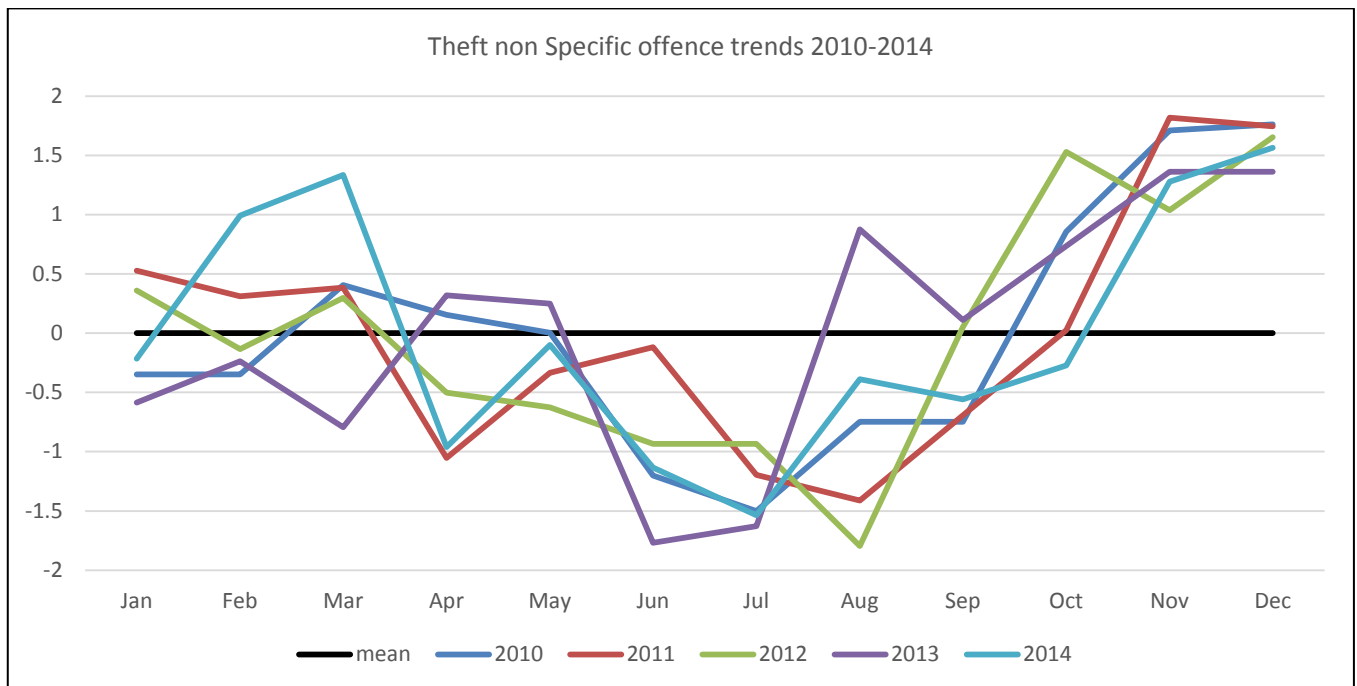
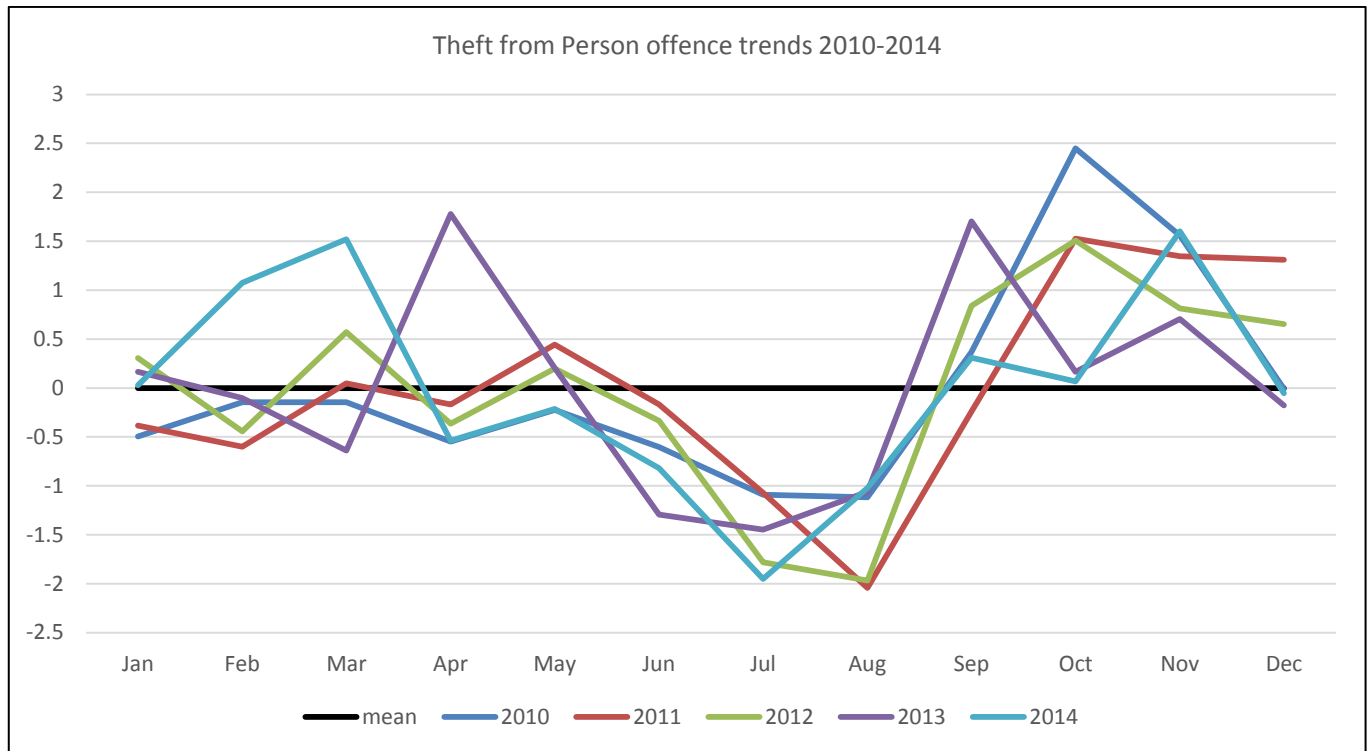
The table below shows the top 10 streets where NTE offending occurs

Row Labels	2008/2009	2009/2010	2010/2011	2011/2012	2012/2013	2013/2014	2014/2015	Grand Total
CALL LANE	268	298	524	610	727	597	537	3561
BRIGGATE	184	232	288	447	458	390	392	2391
ALBION STREET	160	218	421	456	393	263	192	2103
WOODHOUSE LANE	248	308	432	328	316	215	169	2016
COOKRIDGE STREET	159	144	254	263	190	82	104	1196
DUNCAN STREET	83	100	169	185	219	190	112	1058
NEW BRIGGATE	191	235	228	159	124	39	37	1013
THE HEADROW	174	190	128	138	126	104	71	931
BOAR LANE	183	159	158	94	96	114	121	925
MERRION STREET	90	128	90	69	99	66	70	612

This table shows offences committed off street or on street. 7% of entries had a blank location qualifier.

	OFF STREET								
Row Labels	2008/2009	2009/2010	2010/2011	2011/2012	2012/2013	2013/2014	2014/2015	Total	Change 13/14 - 14/15
AFFRAY	10	16	21	10	5	6	8	76	2
ASSAULT	381	380	386	234	233	200	289	2103	89
DRUNK AND DISORDERLY	59	61	57	63	55	33	20	348	-13
MURDER/MANSLAUGHTER	0	0	0	0	0	0	0	0	0
PUBLIC ORDER	50	65	41	23	17	13	13	222	0
ROBBERY	9	12	9	6	2	3	4	45	1
THEFT FROM PERSON	366	635	1089	1150	1195	815	576	5826	-239
THEFT NON SPECIFIC	616	775	926	932	971	795	693	5708	-103
Grand Total	1491	1944	2529	2418	2478	1865	1603	14328	-262
	ON STREET								
Row Labels	2008/2009	2009/2010	2010/2011	2011/2012	2012/2013	2013/2014	2014/2015	Total	Change 13/14 - 14/15
AFFRAY	44	62	51	33	25	15	14	244	-1
ASSAULT	421	499	479	321	268	248	308	2544	60
DRUNK AND DISORDERLY	356	410	491	396	402	216	165	2436	-51
MURDER/MANSLAUGHTER	1	0	1	1	0	0	0	3	0
PUBLIC ORDER	65	82	76	57	53	23	31	387	8
ROBBERY	56	59	27	32	22	36	34	266	-2
THEFT FROM PERSON	132	102	138	167	195	166	180	1080	14
THEFT NON SPECIFIC	56	59	81	100	102	90	72	560	-18
Grand Total	1131	1273	1344	1107	1067	794	804	7520	10

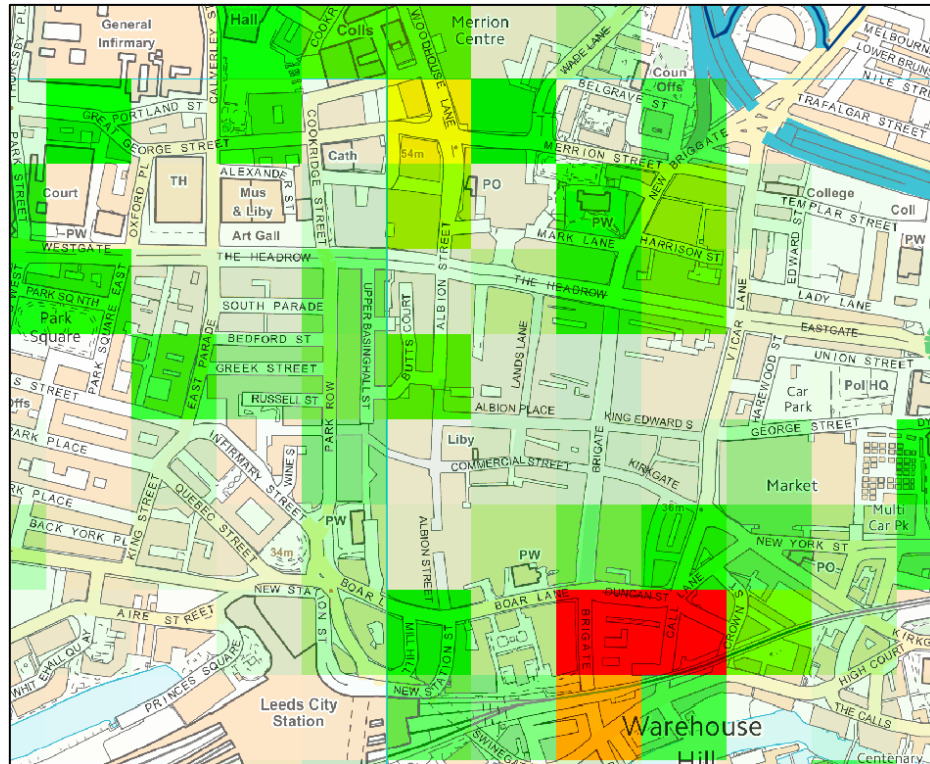
4.2 Seasonality. The charts below show the seasonality of NTE offending in Leeds City centre.



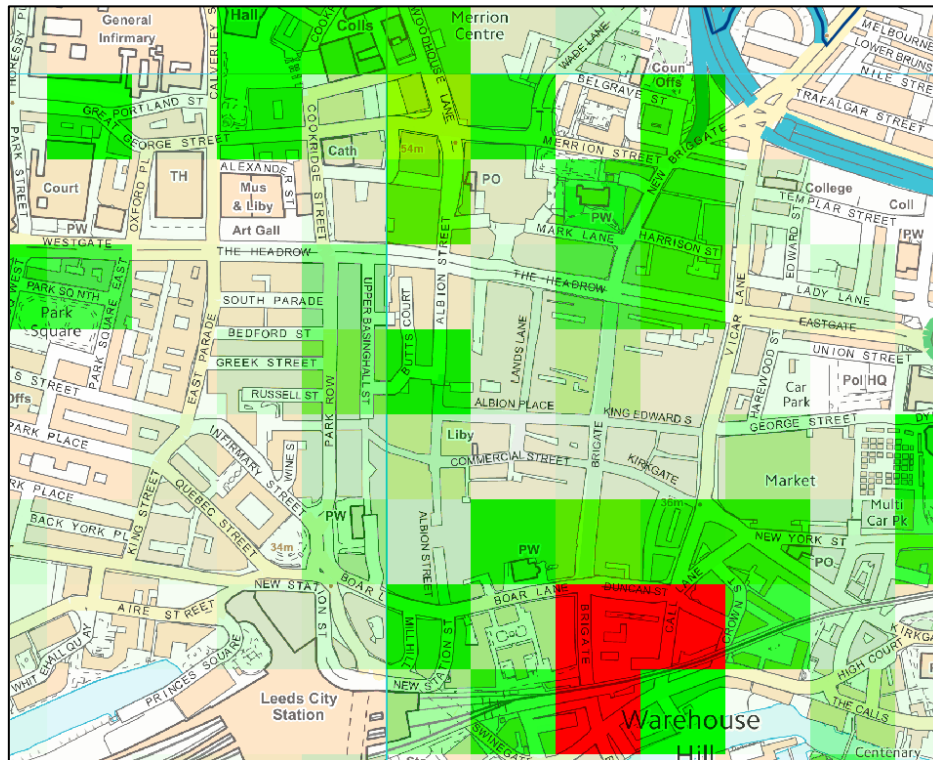
- Common to all these offence types is a lull in volume over the summer months roughly between May – August. Offending increases from around August onwards. This coincides with the new intake/returning students to the Leeds Universities and the general approach towards the Christmas season.

4.3: Maps

Map 1 below shows all historic offending (of offences included in this document) in Leeds City Centre from 2008-2014.



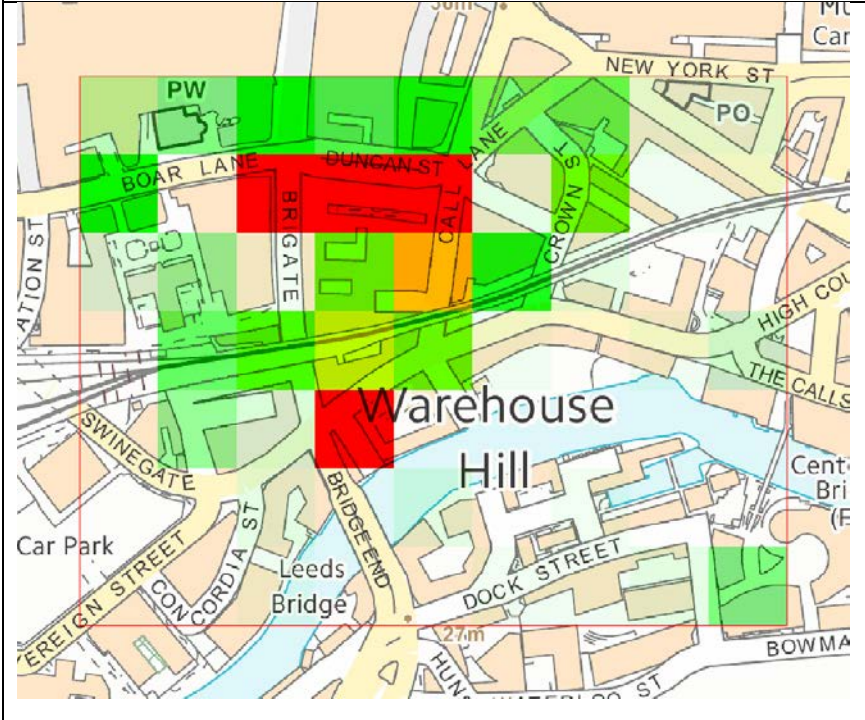
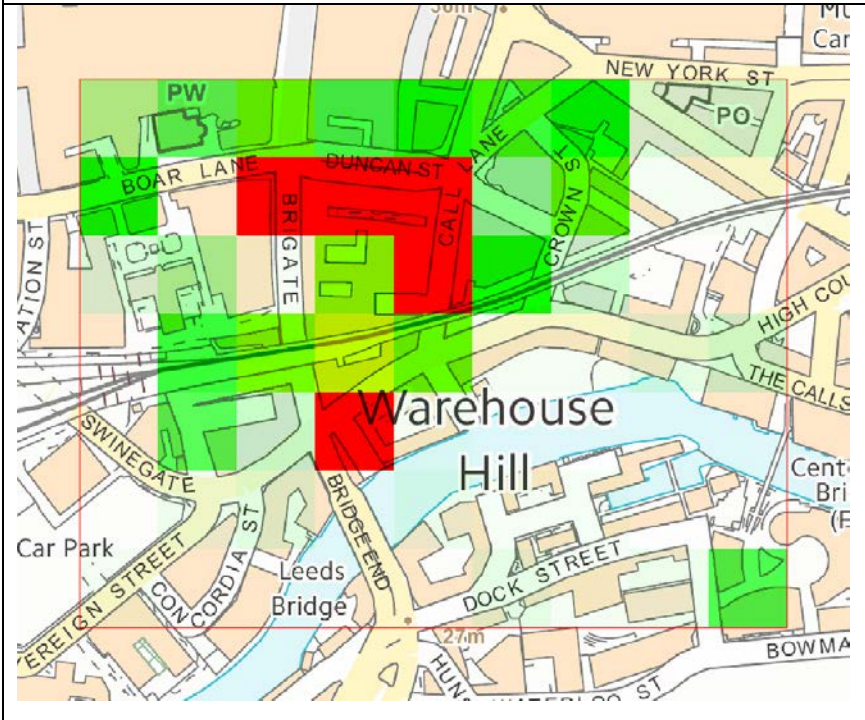
Map 2 shows offending hotspots covering 2014-2015



5. CIP Red Area – comparisons:

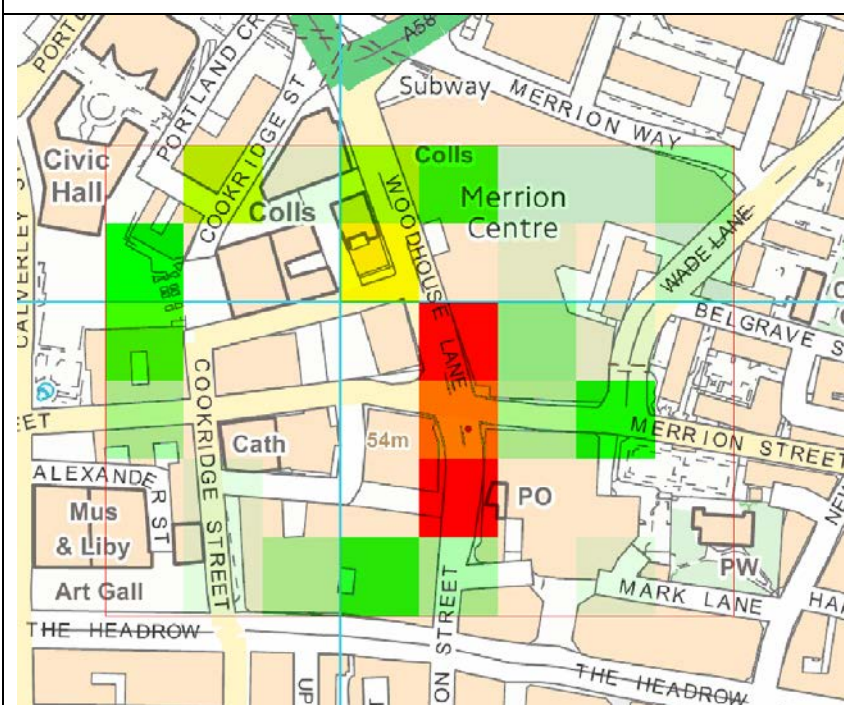
The following areas have been selected in line with the existing 'CIP Red Areas'. The subsequent analysis has been performed on 50m 'hotspots'. The stated crime figures and time analysis is taken from offences occurring with the red outlining square, between 1800 - 0559. Only Violent Crime, Sexual, Other Theft and Robbery offences have been included in this analysis.

Call Lane Red Area:

Map (1:1500):	Details:
	<p>Year: 2013 – 2014 (Sept – Aug)</p> <p>Crime:</p> <ul style="list-style-type: none"> Thft: 995 Robbery: 11 Sexual Offences: 15 Violent Crime: 298 <p>Time Analysis:</p> <ul style="list-style-type: none"> Peak: 0000 - 0400
	<p>Year: 2014 – 2015 (Sept – Aug)</p> <p>Crime:</p> <ul style="list-style-type: none"> Thft: 1788 (+793) Robbery: 21 (+10) Sexual Offences: 37 (+22) Violent Crime: 690 (+392) <p>Time Analysis:</p> <ul style="list-style-type: none"> Peak: 0000 - 0400

Albion Street / Woodhouse Red Area:

Map (1:1500):



Details:

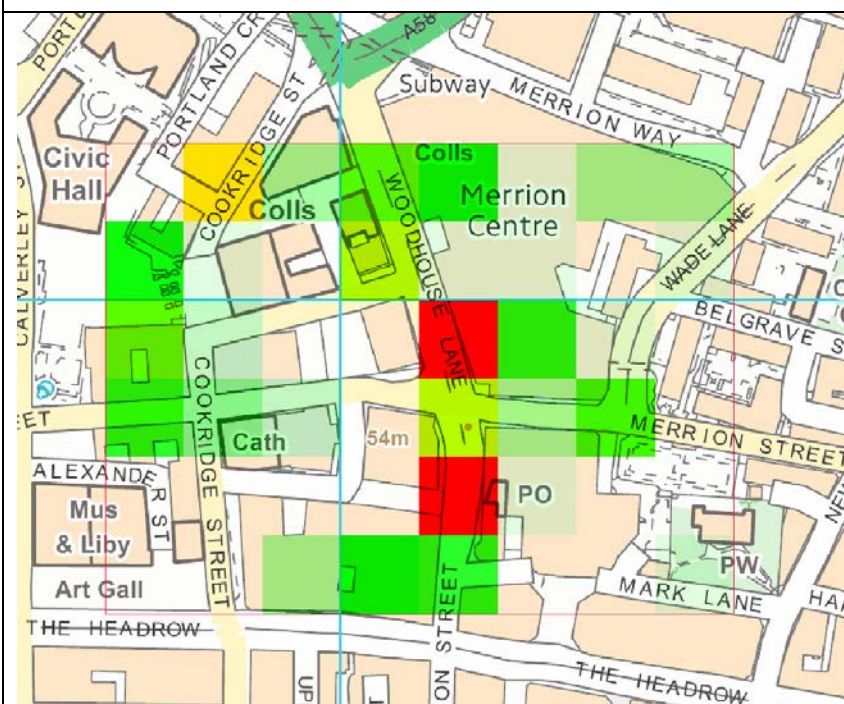
Year: 2013 – 2014 (Sept – Aug)

Crime:

- Theft: 331
- Robbery: 4
- Sexual Offences: 8
- Violent Crime: 121

Time Analysis:

- Peak: 0000 - 0300

**Year: 2014 – 2015 (Sept – Aug)**

Crime:

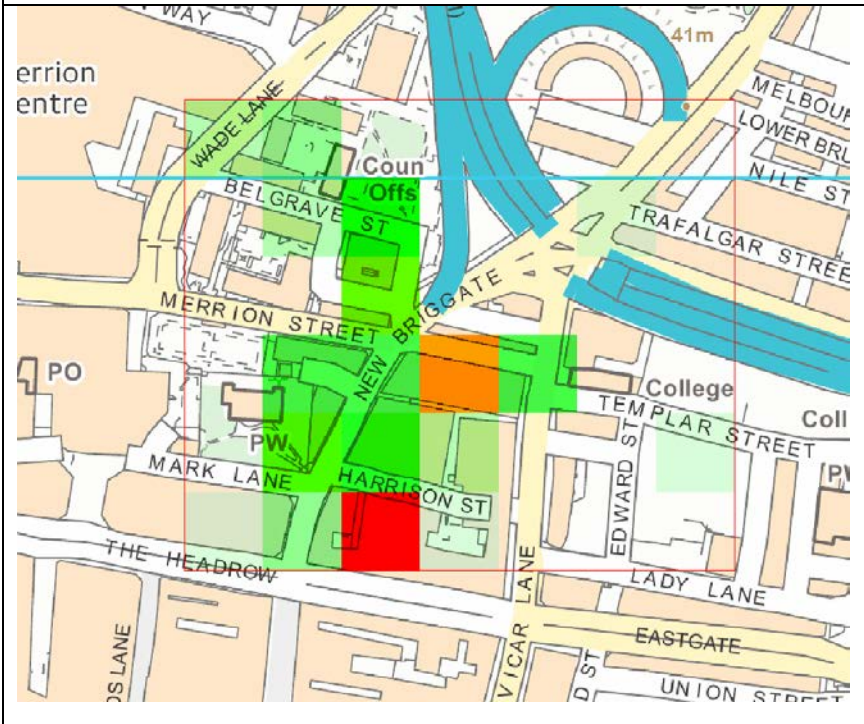
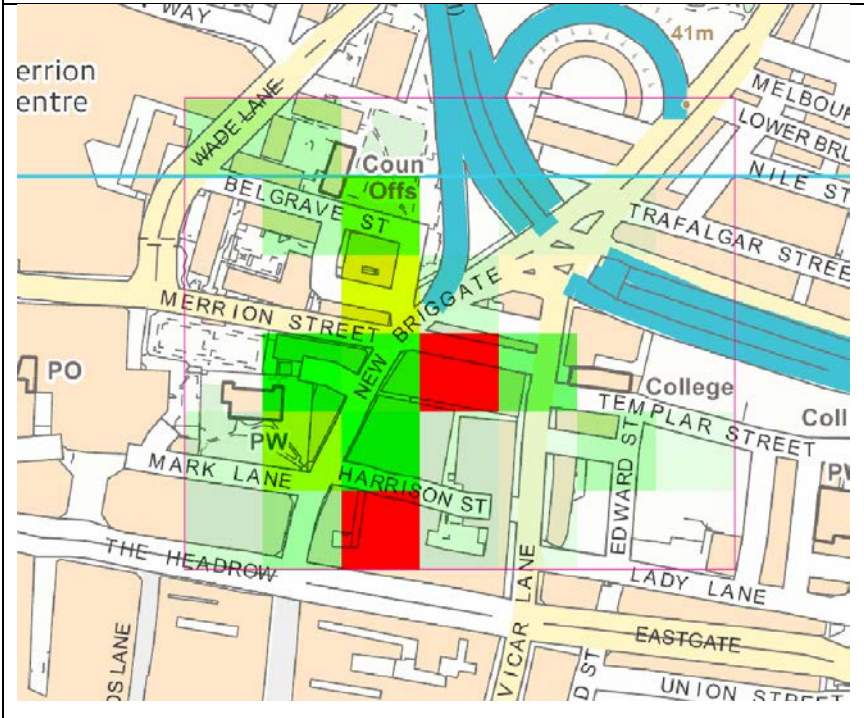
- Theft: 247 (-84)
- Robbery: 1 (-3)
- Sexual Offences: 7 (-1)
- Violent Crime: 167 (+46)

Time Analysis:

- Peak: 0100 – 0300
- Secondary peak: 2300 - 0100

Cross Belgrave Street / Merrion Street / New Briggate:

The following area is not a designated 'red area' in the existing CIP; although, it has been noted as an emerging area of popularity during the 'Night Time Economy'.

Map (1:1500):	Details:
	<p>Year: 2013 – 2014 (Sept – Aug)</p> <p>Crime:</p> <ul style="list-style-type: none"> Thft: 149 Robbery: 4 Sexual Offences: 1 Violent Crime: 40 <p>Time Analysis:</p> <ul style="list-style-type: none"> Peak: 0100 – 0200 Secondary peak: 0200 - 0300
	<p>Year: 2014 – 2015 (Sept – Aug)</p> <p>Crime:</p> <ul style="list-style-type: none"> Thft: 291 (+142) Robbery: 7 (+3) Sexual Offences: 6 (+5) Violent Crime: 84 (+44) <p>Time Analysis:</p> <ul style="list-style-type: none"> Peak: 0100 – 0200 Secondary peak: 0200 - 0300